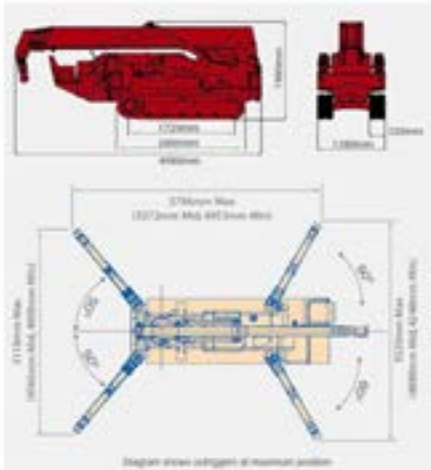


 **Minikraan Maeda MC405CRM(E)**

 **Minikrane Maeda MC405CRM(E)**

 **Minicrane Maeda MC405CRM(E)**

**O Geranòs**  
Hijswerken &  
Industriële Verhuizingen  
[www.ogeranos.eu](http://www.ogeranos.eu)



 **VOORDELEN:**

- Milieuvriendelijk
- Elektrisch aangedreven (*geen uitlaatgassen en geluidsvrij*)
- Radiografische bediening (*continuïteit van zicht op de last*)
- No-Marking (*witte rupsbanden*)
- Zeer compact (*geschikt voor hijsen in kleine ruimtes*)
- Deskundige kraanmachinist

**TECHNISCHE DETAILS:**

- Transportafmetingen: L x B x H = 4980 x 1380 x 1980 mm
- Eigen gewicht : 5.750 kg
- Kraan capaciteit : 3.830 kg
- Max. hijs hoogte : 16,8 meter
- Max. reikwijdte : 20,7 meter



**VORTEILE:**

- Umweltfreundlich
- Elektrisch angetrieben (*kein Auspuff und kein Lärm*)
- Radiographischer Betrieb (*Kontinuität der Sicht der Ladung*)
- No-Marking (*weiße Raupen*)
- Sehr kompakt (*zum Heben in engen Räumen geeignet*)
- Experte Kranführer

**TECHNISCHE DATEN:**

- Transportmaße : L x B x H = 4980 x 1380 x 1980 mm
- Eigengewicht : 5.750 kg
- Krankapazität : 3.830 kg
- Max. Hubhöhe : 16,8 Meter
- Max. Reichweite : 20,7 Meter



**BENEFITS:**

- Environmentally friendly
- Electrically driven (*no exhaust and no noise*)
- Radiographic operation (*continuity of view of the load*)
- No-Marking (*white caterpillars*)
- Very compact (*suitable for hoisting in small spaces*)
- Expert crane operator

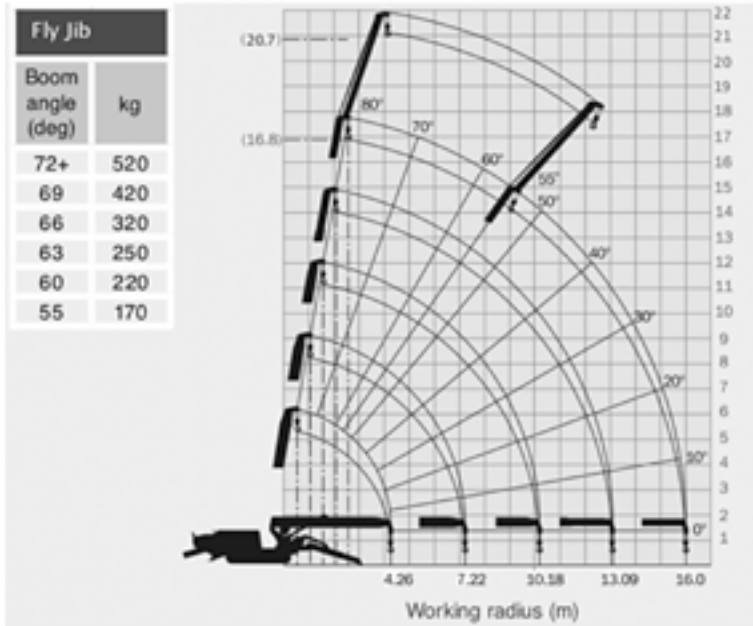
**TECHNICAL DETAILS:**

- Transport dimensions: L x W x H = 4980 x 1380 x 1980 mm
- Own weight : 5.750 kg
- Crane capacity : 3.830 kg
- Max. lifting height : 16,8 meters
- Max. reach : 20,7 meters

# O Geranos



Hijswerken &  
Industriële Verhuizingen  
[www.ogeros.eu](http://www.ogeros.eu)



## MC405CRM(E)



Minikraan Maeda



Minikrane Maeda



Minicrane Maeda

### MINIKRANEN - TECHNISCHE GEGEVENS

| merk         | type             | transportafmetingen(mm) |             |             | eig. gew.<br>kg | max. hijscap.<br>kg | gieklengthe (m) |             | vlucht/radius (m) |             |
|--------------|------------------|-------------------------|-------------|-------------|-----------------|---------------------|-----------------|-------------|-------------------|-------------|
|              |                  | lengte                  | breedte     | hoogte      |                 |                     | ex. jib         | in. jib     | ex. jib           | in. jib     |
| Reedyk       | <b>C3410</b>     | 2900                    | 960         | 2020        | 5900            | 4250                | 16              | X           | 13,35             | X           |
| Reedyk       | <b>C3412</b>     | 2900                    | 960         | 2020        | 6880            | 3850                | 16              | 22          | X                 | 19,5        |
| Hoeflon      | <b>C6</b>        | 3140                    | 750         | 1950        | 2850            | 3000                | 11,5            | 16,4        | 9,25              | 14,4        |
| Hoeflon      | <b>C10</b>       | 3890                    | 800         | 1920        | 4700            | 4000                | 16,3            | 22          | 13,7              | 19,8        |
| Jekko        | <b>SPX424CDH</b> | 3160                    | 770         | 1870        | 2535            | 2400                | 8,9             | 13,85       | 7,6               | 11,8        |
| Jekko        | <b>SPX527CDH</b> | 4226                    | 1100        | 1957        | 3980            | 2700                | 12,1            | 17          | 11,2              | 10,5        |
| <b>Maeda</b> | <b>MC405CRM</b>  | <b>4980</b>             | <b>1380</b> | <b>1980</b> | <b>5750</b>     | <b>3830</b>         | <b>16,8</b>     | <b>20,7</b> | <b>16</b>         | <b>12,5</b> |

### PICK & CARRY CRANES - TECHNISCHE GEGEVENS

| merk    | type           | transportafmetingen(mm) |         |        | eig. gew.<br>kg | max. hijscap.<br>kg | gieklengthe (m) |         | vlucht/radius (m) |         |
|---------|----------------|-------------------------|---------|--------|-----------------|---------------------|-----------------|---------|-------------------|---------|
|         |                | lengte                  | breedte | hoogte |                 |                     | ex. jib         | in. jib | ex. jib           | in. jib |
| Galizia | <b>GF28</b>    | 2050                    | 930     | 1410   | 2400            | 2800                | 6,5             | 7,5     | 4,8               | 5,8     |
| Galizia | <b>GF200</b>   | 4502                    | 2296    | 2032   | 19000           | 20000               | 9,4             | 12,5    | 6,1               | 9,2     |
| Galizia | <b>GF500</b>   | 5180                    | 2290    | 2389   | 38000           | 50000               | 12,9            | 16,1    | 9                 | 13,2    |
| JMG     | <b>MC160</b>   | 4395                    | 2070    | 2000   | 15000           | 16000               | 11              | 12      | 8,2               | 9,7     |
| JMG     | <b>MC250</b>   | 4770                    | 2150    | 2200   | 24400           | 25000               | 11,5            | X       | 7,7               | X       |
| JMG     | <b>MC300</b>   | 5170                    | 2250    | 2300   | 28000           | 30000               | 13              | X       | 8,4               | X       |
| JMG     | <b>MC450</b>   | 5100                    | 2290    | 2450   | 32000           | 45000               | 13              | X       | 8,4               | X       |
| JMG     | <b>MC500</b>   | 5480                    | 2400    | 2495   | 38000           | 50000               | 14              | X       | 9,2               | X       |
| Valla   | <b>90E</b>     | 3435                    | 1735    | 2290   | 9000            | 9000                | 7,5             | X       | 5,3               | X       |
| Valla   | <b>120E</b>    | 4300                    | 2100    | 2320   | 13000           | 12000               | 10              | X       | 7                 | X       |
| Valla   | <b>180E</b>    | 4690                    | 2200    | 2400   | 19000           | 18000               | 10              | X       | 7                 | X       |
| Valla   | <b>250E</b>    | 5200                    | 2290    | 2430   | 25000           | 25000               | 10              | X       | 7                 | X       |
| Valla   | <b>400E</b>    | 5110                    | 2350    | 2470   | 28000           | 40000               | 10              | X       | 7                 | X       |
| Valla   | <b>900E</b>    | 6250                    | 2500    | 2650   | 45000           | 90000               | 13              | X       | 9                 | X       |
| Ormig   | <b>55/60iE</b> | 5680                    | 2350    | 2350   | 43000           | 60000               | 13,2            | X       | 8,5               | X       |